



CALIFORNIA  
QSO PARTY

# The 40<sup>th</sup> Running of CQP

N6RCE – Kevin    W6ZZZ – Marc  
August 2005



CALIFORNIA  
QSO PARTY

**FCC Mandated Warning !**

Contains material designed to tug at your "NCCC Heartstrings"  
and make you want to go out and KB for a new CQP record !

## **CQP Factoids and Records**

W6ZZZ – Marc  
August 2005

# CQP Factoids and Records

## Topics

---

- Factoids
  - History
  - Activity begets activity
  - DXpedition planning
- Records (what motivates you?)
  - What are the smallest CA county records?
  - What are the smallest State records?
  - What are the oldest CA county records?
  - What are the oldest State records?
  - Who holds the club records for CA and non-CA?
  - Who holds the most CA county records?
  - How many CA county records were set in 2004?
  - How many non-CA records were set in 2004?

# CQP Factoids

## What is a Factoid?

---

- From <http://www.yourdictionary.com/>
  - **Factoid:** a piece of unverified or inaccurate information that is presented in the press as factual, often as part of a publicity effort, and that is then accepted as true because of frequent repetition
- Also known as:
  - *statistics, trivia, useless facts, and just plain facts*

# CQP Factoids

## CQP History – the Earliest Years

---

- <http://www.cqp.org/History.html>
  - First CQP was in 1966, Tom (WB6KIL, now K1KI), and Gene (WB6EUZ) organized the first two runnings
  - John (WA6JDT, now N6JM) ran it from 1968 to 1974

# CQP Factoids

## CQP History – the NCCC Years

---

- NCCC took over CQP in 1975
  - 1975 - ? Rusty (W6OAT)
  - ? Doug (N6CN)
  - ? George (WB6DSV)
  - Early 1980's K6XO
  - 1986 - 1990 Gary (WA6VEF, now VA7RR), et al
  - 1991 - 1992 Ken (K6TA)
  - 1993 W6EU
  - 1994 - 2004 Al (AD6E)
  - 2005 Kevin (N6RCE)

# CQP Factoids

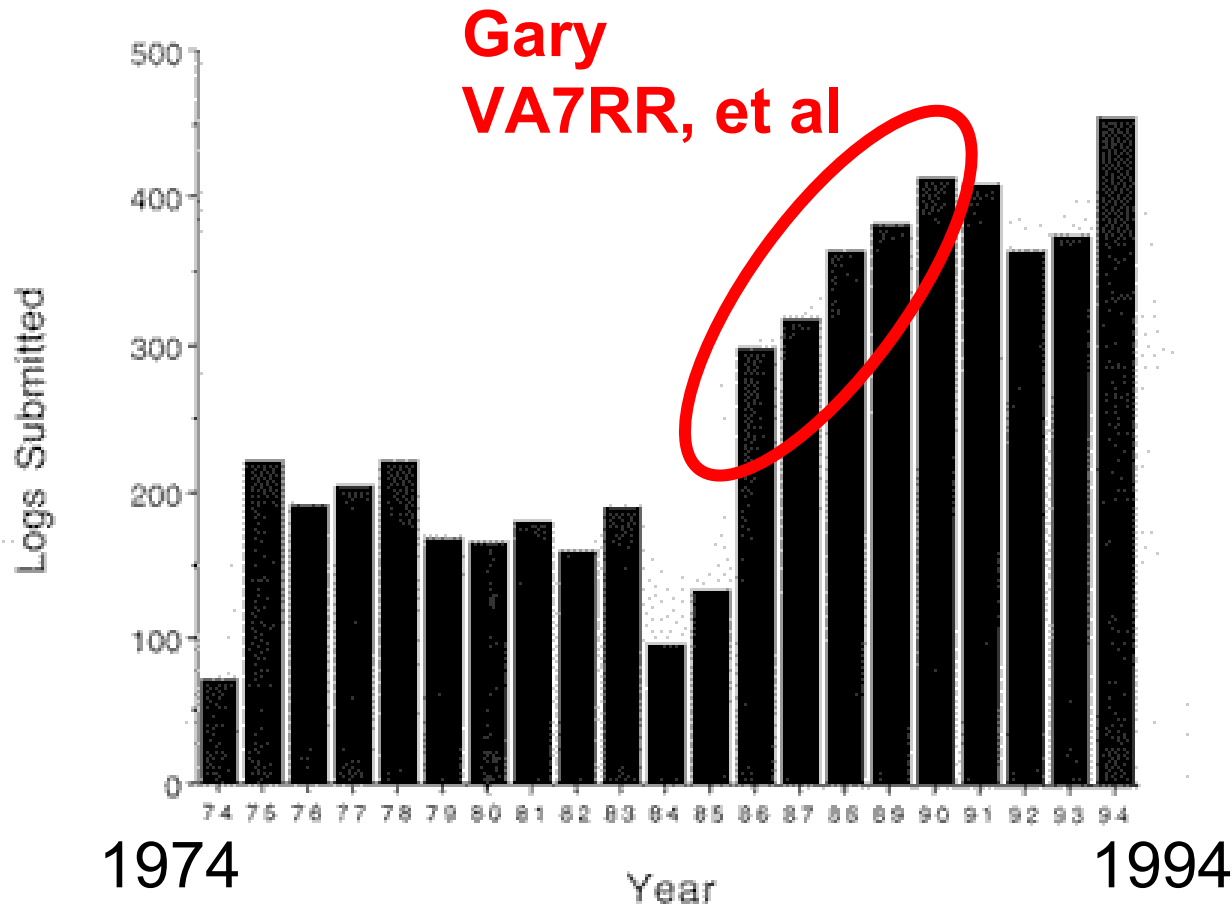
## CQP History – Notable Events

---

- Current rules date from 1975 and W6OAT
- Added wine awards in 1986
  - Idea from Ron (N6AUV), SK
- Huge escalation of plaques and other awards in 1986
- Added participation t-shirts in 1992
  - Artwork by Tom (N6BT)?

# CQP Factoids

## CQP History – Logs submitted 1974-1994



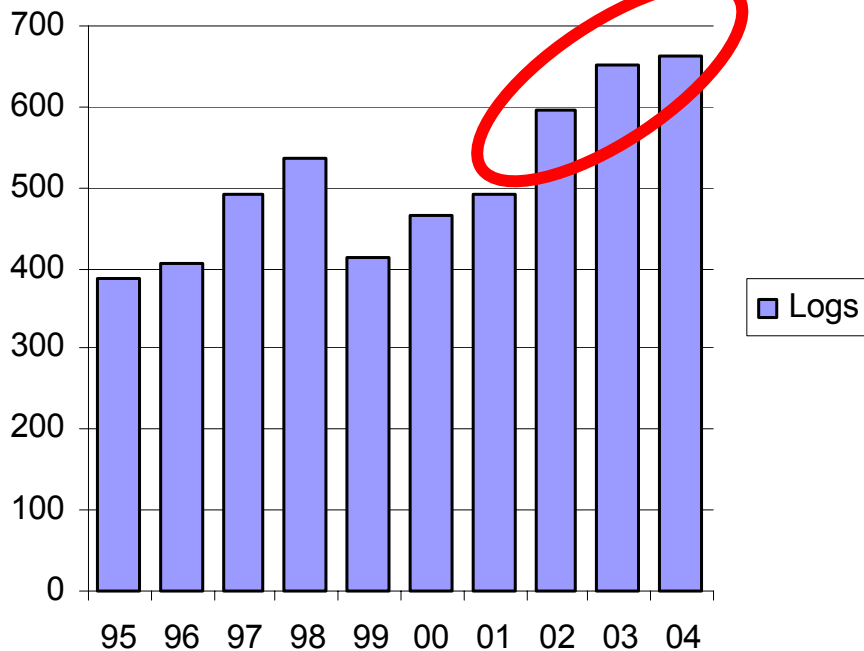


# CQP Factoids

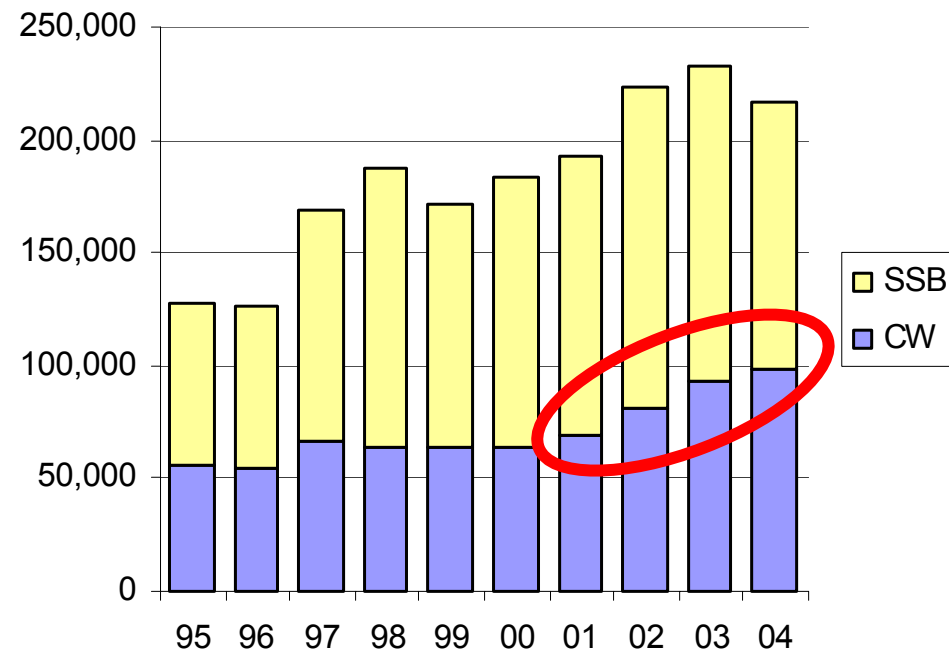
## CQP History – Logs submitted 1995-2004

- In 2004 – logs submitted up, CW Qs up, SSB Qs down
- Lots more data at <http://www.cqp.org/Results.html>

Logs Submitted



QSOs



# CQP Factoids

## Activity Begets Activity

---

- From the CQP History
  - “There has to be activity in place to attract more activity.
  - People read about the event and then take a look to see what’s happening.
  - If there’s nothing there, they simply forget it.
  - If something is going on, they look more closely and take a stab at it themselves... and if there’s enough happening, they’ll get hooked.
  - Then the process continues to feed on itself.”

# CQP Factoids

## Activity Begets Activity

---

- In 2004
  - 662 logs submitted
  - 98,046 CW QSOs
  - 119,129 Phone QSOs
- What we need to take CQP to “the next level”
  - Get more CA stations “on the air”
    - Any new ideas on how to do this?
  - Get more CA mobile stations
    - Although fun and potential participation are limited by CA roads and geographical “facts of life”

# CQP Factoids

## DXpedition Planning

---

- Start planning for your CQP record-breaking effort
  - CA county expedition, some things you might consider
    - rare county (check the last couple years of activity)
    - county with a low all-time record
    - good public access and RF propagation spot
    - on the county line to try to set two records at once
  - Nearby state to take advantage of the “low bands” in this sunspot decline (like Nevada\*)
  - North or South American country DXpedition (like KP2, P4, PJ2 or ZF)

\* = factoid alert

# CQP Records

## What are the smallest CA county records?

---

- Just because these are the “smallest” CA county records doesn’t mean they are “small” records
- These scores look pretty impressive to me
- Your plan can be to guest-op at a station
- Or pack up your gear and go on a “county expedition” to do it “Field Day” style

# CQP Records

What are the smallest CA county records?

| County     | Call             | Yr          | Score          | Qs          | Mul       |
|------------|------------------|-------------|----------------|-------------|-----------|
| Tulare     | WA6FGV           | 1995        | 153,045        | 1122        | 57        |
| Del Norte  | N6YEU            | 2003        | 154,454        | 1059        | 58        |
| San Benito | KG6GF            | 1988        | 169,534        | 1294        | 58        |
| Colusa     | K6AAW            | 1988        | 171,854        | 1353        | 58        |
| Sierra     | K6S (KU6J op)    | 2002        | 179,771        | 1274        | 58        |
| Lassen     | AD6E             | 2001        | 187,957        | 1351        | 57        |
| Tuolumne   | N6IP (now K6XX)  | 1991        | 191,688        | 1491        | 56        |
| Calaveras  | W6BSY            | 1998        | 196,156        | 1494        | 58        |
| Mariposa   | K6HNZ            | 1982        | 199,288        | 1718        | 58        |
| Napa       | W6OSP (AD6E op)  | 1998        | 199,305        | 1348        | 58        |
| Alpine     | AA6KX (now N6NT) | 1994        | 199,557        | 1421        | 57        |
| El Dorado  | <b>K6LRN</b>     | <b>2004</b> | <b>200,326</b> | <b>1384</b> | <b>57</b> |
| Amador     | K6PU             | 1996        | 203,638        | 1364        | 58        |

# CQP Records

## What are the smallest State/Province records?

---

- With increased CA activity this could be the best year yet to set a record (sunspots low or not)
- Call up your contesting friends and encourage them to “get on the air” for CQP
- Mount a DXpedition to Arizona; ask AA5AU if you can try out his new SO2R setup, etc...

# CQP Records

What are the smallest State/Province records?

| State/Province | Call             | Yr          | Score         | Qs         | Mul       |
|----------------|------------------|-------------|---------------|------------|-----------|
| Alberta        | VE6AO            | 2002        | 44,891        | 423        | 53        |
| Saskatchewan   | VE5SF            | 2002        | 50,402        | 381        | 58        |
| New Hampshire  | N1KWF            | 1999        | 52,326        | 389        | 57        |
| Arizona        | <b>W7SW</b>      | <b>2004</b> | <b>56,403</b> | <b>389</b> | <b>54</b> |
| South Dakota   | <b>K0HW</b>      | <b>2004</b> | <b>64,432</b> | <b>513</b> | <b>55</b> |
| Louisiana      | N5II             | 2002        | 66,352        | 467        | 58        |
| Connecticut    | W1RAN            | 2003        | 67,200        | 462        | 56        |
| South Carolina | W4YDD            | 1998        | 68,292        | 464        | 56        |
| Alaska         | WL7KY            | 1998        | 69,720        | 539        | 56        |
| Kansas         | N0AG             | 2002        | 69,720        | 585        | 56        |
| New Mexico     | K5AM             | 2003        | 70,448        | 552        | 56        |
| Maritimes-NL   | VE1JX (K6HNZ op) | 2001        | 70,672        | 631        | 58        |
| Wyoming        | <b>K07X</b>      | <b>2004</b> | <b>71,601</b> | <b>512</b> | <b>58</b> |



# CQP Records

## What are the oldest CA county records?

---

- N6BV holds two of the oldest records and one of them has stood for 26 years!
- Of course, these all-time records may have stood for so many years because the score represents a phenomenal feat from that county

# CQP Records

What are the oldest CA county records?

| County        | Call             | Yr   | Score   | Qs   | Mul |
|---------------|------------------|------|---------|------|-----|
| San Francisco | N6BV             | 1979 | 232,560 | 2040 | 57  |
| Mariposa      | K6HNZ            | 1982 | 199,288 | 1718 | 58  |
| San Mateo     | N6BV             | 1982 | 270,454 | 2245 | 58  |
| Kings         | N6BT (WA6VEF op) | 1986 | 258,738 | 2046 | 58  |
| Colusa        | K6AAW            | 1988 | 171,854 | 1353 | 58  |
| San Benito    | KG6GF            | 1988 | 169,534 | 1294 | 58  |
| Tehama        | AA6DX            | 1988 | 216,514 | 1685 | 58  |
| Nevada        | AI6V             | 1989 | 288,318 | 2278 | 58  |
| San Diego     | K6NA (N6TR op)   | 1989 | 366,618 | 2928 | 58  |

# CQP Records

## What are the oldest State/Province records?

---

- The declining sunspot cycle should make it easier for contesters to set “nearby” out-of-state records \*
- VA7RR (Gary in British Columbia) summed it up in his 2003 CQP soapbox with “I’m favored if the W6s have lousy conditions on 10 and 15, and are forced to spend their daylight hours on 20”

\* = factoid alert

# CQP Records

What are the oldest State/Province records?

| State/Province | Call              | Yr   | Score   | Qs   | Mul |
|----------------|-------------------|------|---------|------|-----|
| Nevada         | WA7NIN (W6OAT op) | 1983 | 73,776  | 606  | 53  |
| Maryland-DC    | KM3T              | 1986 | 80,541  | 606  | 57  |
| Oregon         | N6TR/7            | 1986 | 130,500 | 1030 | 58  |
| Nebraska       | KV0I              | 1988 | 132,124 | 1039 | 58  |
| Minnesota      | WA0QIT (KF0FC op) | 1989 | 76,676  | 583  | 58  |
| Florida        | K4XS              | 1990 | 138,968 | 1106 | 58  |
| Mississippi    | N5OVV             | 1990 | 73,312  | 631  | 58  |
| Wisconsin      | N0BSH/9           | 1990 | 160,080 | 1280 | 58  |

# CQP Records

## Who holds the club records for CA and non-CA?

- The Mother Lode DXCC club has been winning the CA club plaque for quite a number of years.
- Can some other CA club make 2005 a real “horse race”?

| California | Call             | Yr   | Score     | Qs | Mul |
|------------|------------------|------|-----------|----|-----|
| Club       | Mother Lode DXCC | 2003 | 2,710,071 |    |     |

- Contest Club Ontario set the Non-CA club record in 2004. They bested SECC and TCG in a spirited battle.
- A big battle in 2005 means lots of ops “on the air”

| State/Province | Call                 | Yr   | Score     | Qs | Mul |
|----------------|----------------------|------|-----------|----|-----|
| Club           | Contest Club Ontario | 2004 | 1,157,252 |    |     |

# CQP Records

## Who holds the most CA county records?

- AD6E currently holds seven of the CA county records
- A good question is “where will AD6E be in 2005?”

| County | Call            | Yr          | Score          | Qs          | Mul       |
|--------|-----------------|-------------|----------------|-------------|-----------|
| Napa   | W6OSP (AD6E op) | 1998        | 199,305        | 1348        | 58        |
| Lake   | AD6E            | 1999        | 214,020        | 1512        | 58        |
| Yolo   | AD6E            | 2000        | 212,454        | 1450        | 58        |
| Lassen | AD6E            | 2001        | 187,957        | 1351        | 57        |
| Merced | W6CQP (AD6E op) | 2003        | 225,820        | 1551        | 56        |
| Sutter | <b>AD6E</b>     | <b>2004</b> | <b>225,092</b> | <b>1570</b> | <b>56</b> |
| Yuba   | <b>AD6E</b>     | <b>2004</b> | <b>225,092</b> | <b>1570</b> | <b>56</b> |

# CQP Records

## How many CA county records were set in 2004?

---

- Eleven (11) new California county records were set
- K6XX has set a new Santa Cruz record in each of the last four years

# CQP Records

How many CA county records were set in 2004?

| County     | Call              | Yr   | Score   | Qs   | Mul |
|------------|-------------------|------|---------|------|-----|
| Alameda    | N6CQP (KF6RIP op) | 2004 | 237,975 | 1642 | 57  |
| El Dorado  | K6LRN             | 2004 | 200,326 | 1384 | 57  |
| Mendocino  | K6IF              | 2004 | 269,787 | 1981 | 58  |
| Mono       | W6ML (W6KC op)    | 2004 | 212,338 | 1426 | 58  |
| Placer     | KF6T              | 2004 | 289,246 | 2013 | 58  |
| Plumas     | KX7M              | 2004 | 215,488 | 1461 | 56  |
| Santa Cruz | K6XX              | 2004 | 335,182 | 2373 | 58  |
| Shasta     | K6MR              | 2004 | 244,644 | 1741 | 58  |
| Sonoma     | W6XU              | 2004 | 267,119 | 2036 | 58  |
| Sutter     | AD6E              | 2004 | 225,092 | 1570 | 56  |
| Yuba       | AD6E              | 2004 | 225,092 | 1570 | 56  |



# CQP Records

## How many non-CA records were set in 2004?

---

- Ten (10) state, province and continent records were set
- Low sunspots didn't deter these winners

# CQP Records

How many non-CA records were set in 2004?

| State/Province | Call   | Yr   | Score   | Qs  | Mul |
|----------------|--------|------|---------|-----|-----|
| Alabama        | WA1FCN | 2004 | 87,174  | 608 | 58  |
| Arizona        | W7SW   | 2004 | 56,403  | 389 | 54  |
| Indiana        | KE9I   | 2004 | 134,328 | 965 | 58  |
| New York       | N2CU   | 2004 | 127,484 | 976 | 58  |
| Oklahoma       | K5YAA  | 2004 | 127,513 | 879 | 58  |
| South Dakota   | K0HW   | 2004 | 64,432  | 513 | 55  |
| Vermont        | KK1L   | 2004 | 94,714  | 715 | 58  |
| Virginia       | K7SV   | 2004 | 97,411  | 661 | 58  |
| West Virginia  | N8II   | 2004 | 90,480  | 669 | 58  |
| Wyoming        | KO7X   | 2004 | 71,601  | 512 | 58  |

# Contest Size

|             | 2005   | 2004      | 2003      |
|-------------|--------|-----------|-----------|
| Michigan    | 239    | 178       | 206       |
| Ohio        |        | 165       | 175       |
| New England | (292)  | 295       | 269       |
| Florida     | (<700) | 706       | 663       |
| Georgia     | (140)  | 89        | 57        |
| Salmon Run  |        | 158       |           |
| Oregon      | 83     | 50        |           |
| Nevada      |        |           |           |
| Sweepstakes |        | 1557/1113 | 1582/1239 |

# Power Mobiling

---

- 1989 CQP – N6BT, WA6VEF (now VA7RR), VE7NKI
- MOMR – Two complete stations, each with a KW
- Two Element Tri-bander 20/15/10 – separate feedlines
- Towed Gas Generator
- Full operation while rolling
- Worked 5H3TW – 15CW while in a canyon on I-5
- About 1500 QSOs

# A Picture...



# Of course...





# Oh....



# Other recent mobile ops

---

- K6AQL (K0DI, K0KTZ)
- K6III – K0KA (MO), KX6SUB (IA)
- W6OAT & K2RD
  - take it away Rusty and Ira!



# W6OAT/M

---

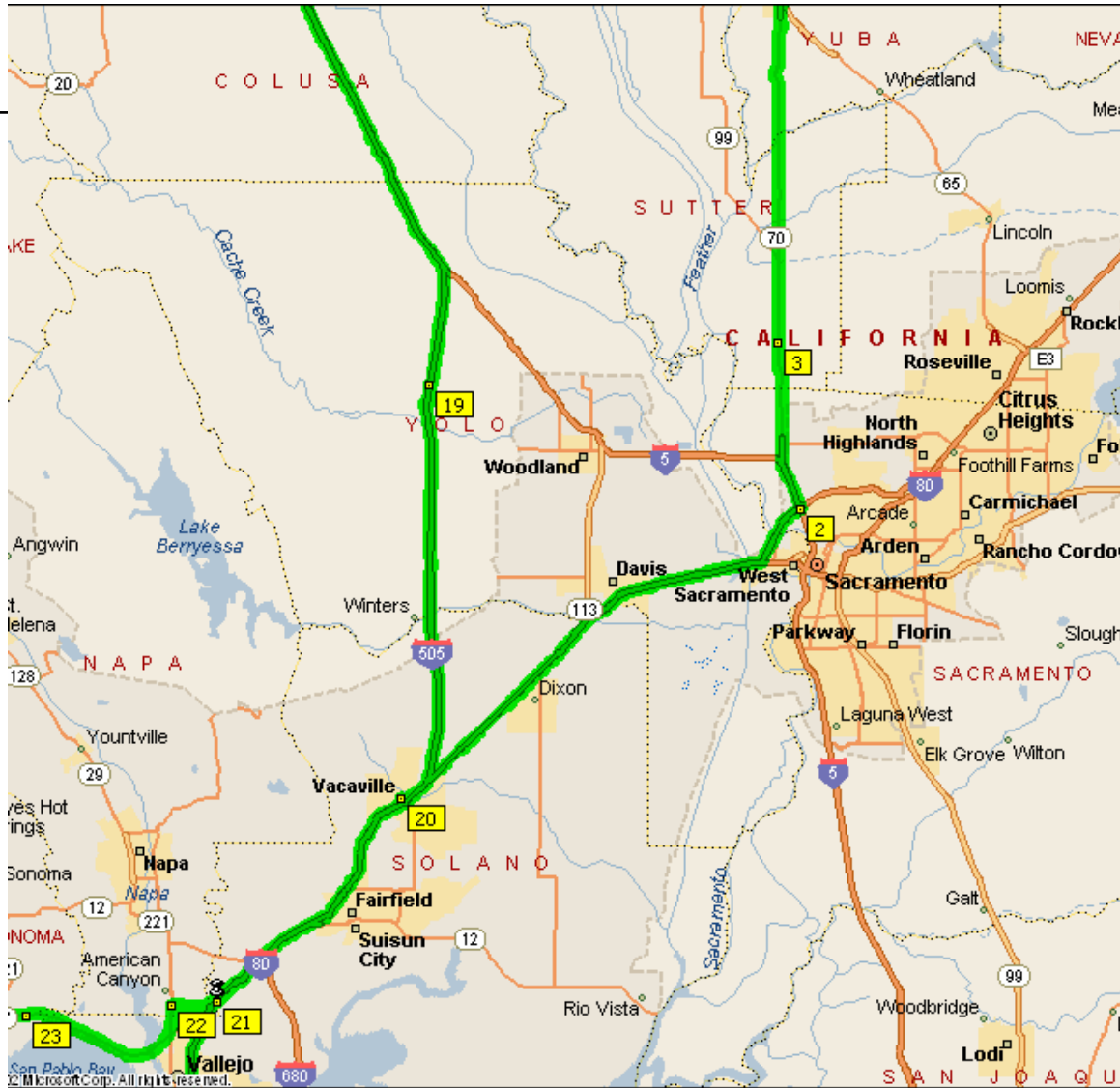
CQP – October 2003 (and 2004)  
K2RD – Chauffeur  
W6OAT - OP

# 2003 Route – 19 Counties



# No Man's Land







Microsoft Corp. All rights reserved.



# A Good Location!



# Sorry For The Glare





# QRX In Mt. Shasta





# Too Much QRN!



# 2003 Station Description

---

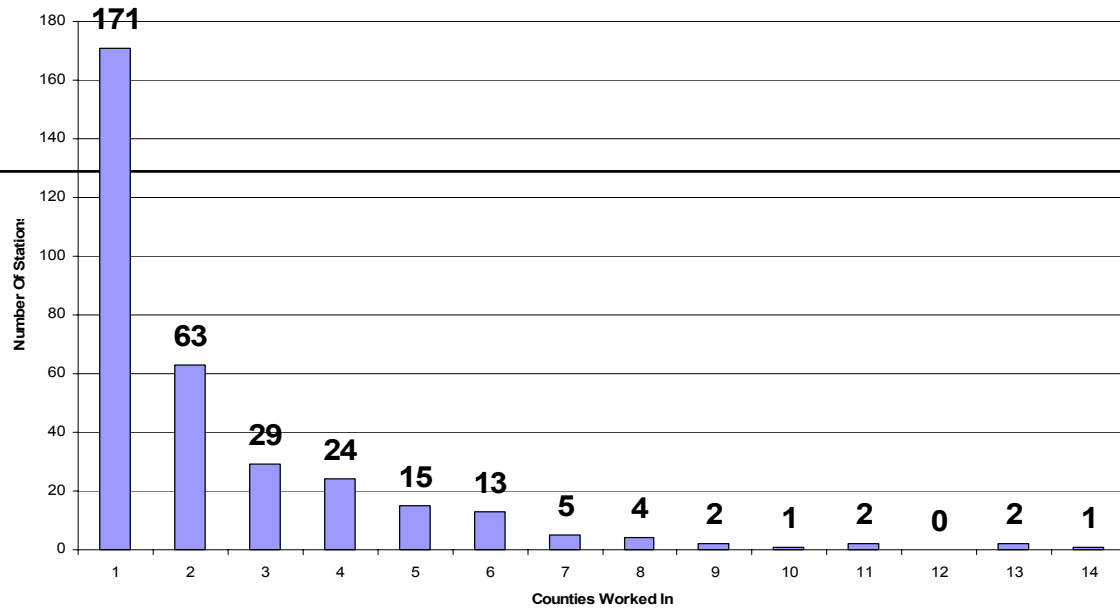
- 2000 Toyota Avalon
- IC-706Mk2 100W
- 6' Screwdriver on Trunk Mount
- Laptop – Writelog – W5XD+ Keyer
- Spare 706 Needed it!!!

# 2004 Station Description

---

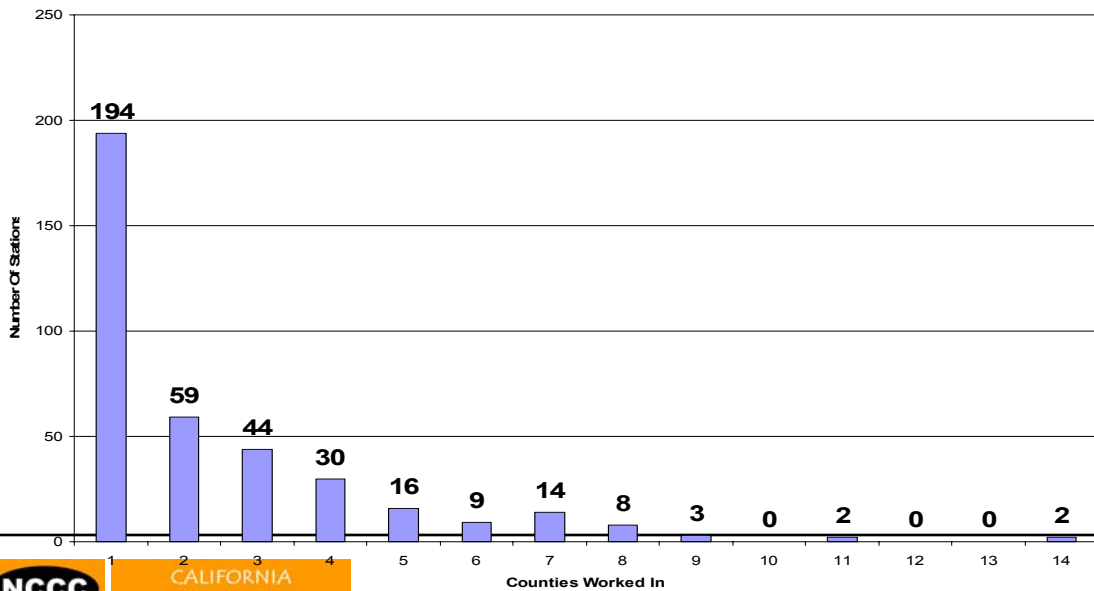
- 2000 Toyota Avalon
- IC-706Mk2 100W
- LDG Auto tuner
- Hamstick on Roof Mag Mount
- Hamstick on Trunk Mount
- Laptop – Writelog – W5XD+Keyer
- 30' Telescoping Pole – Yoyo-Dipole
- Spare Rig: Didn't need it!!
  - Did need emergency paddle!!

Multi-County QSOs 2003



| Stations Worked |       |
|-----------------|-------|
| 2003            | - 333 |
| 2004            | - 381 |

Multi-County QSOs 2004



CALIFORNIA  
QSO PARTY

# CQP 2003 – Q's Per County

| <u>County</u> | <u>Minutes</u> | <u>QSOs</u> | <u>Qs/Hour</u> | <u>Comment</u>                      |
|---------------|----------------|-------------|----------------|-------------------------------------|
| Solano        | 54             | 53          | 59             |                                     |
| Yolo          | 30             | 43          | 86             |                                     |
| Sacramento    | 9              | 10          | 67             |                                     |
| Sutter        | 17             | 13          | 46             |                                     |
| Yuba          | 70             | 52          | 45             |                                     |
| Nevada        | 36             | 27          | 45             |                                     |
| Sierra        | 37             | 74          | 120            | Parked to make QSOs at county line  |
| Plumas        | 95             | 61          | 39             |                                     |
| Lassen        | 45             | 34          | 45             |                                     |
| Shasta        | 115            | 96          | 50             |                                     |
| Siskiyou      | 94             | 43          | 27             |                                     |
| Tehama        | 36             | 35          | 58             |                                     |
| Glenn         | 75             | 81          | 65             | Parked by I-5                       |
| Napa          | 24             | 33          | 83             |                                     |
| Sonoma        | 6              | 8           | 80             |                                     |
| Marin         | 30             | 42          | 84             | Parked at Headlands above GG Bridge |
| San Francisco | 38             | 45          | 71             |                                     |
| San Mateo     | 12             | 20          | 100            |                                     |

# Why'd We Do It?

---

- We could.
- Never done it before.
- See some pretty country.
- Support CQP by activating counties.
- Fun

# County Expeditions

---

- N6RC - Glenn
  - N6RC & N6RCE – 1<sup>st</sup> time county expedition
  - Article submitted to QST
- K6L / K6C – Lake and Colusa
- N6A – Alpine, er Placer
- KS6U - Modoc
- ND6E – San Benito
- W6ML - Mono
- KX7M – Plumas
- AD6E – the all time county lineman

# Photo Album

N6RC

CQP 2004

Glenn County



# The N6RC Rig



Sunrise - Saturday





Beaming 70 degrees



# Typing Lessons for N6RCE



# Draining the Battery

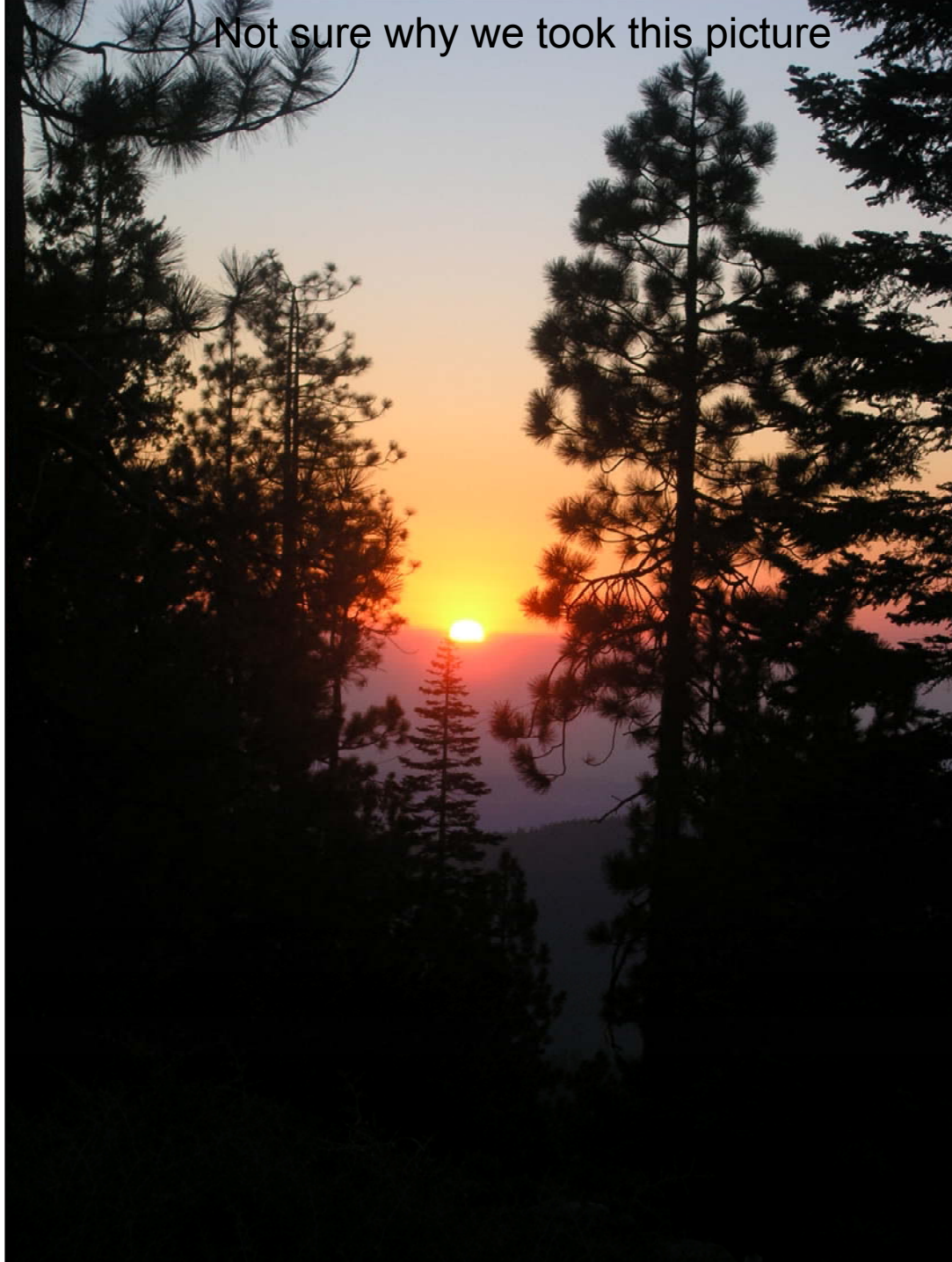




# Sunrise – CQP Style



Not sure why we took this picture



# Photo Album

KS6U

CQP 2003

MODOC







# CQP -

---

- What's New
  - Log submission deadline – Nov 1<sup>st</sup>
  - Web page for county ops
  - Web page for log submission
  - Promotional Token
  - Email most Invitations
- What's the same
  - Wine, Plaques, Certificates
  - Not yet for RTTY
  - T-shirts



# CQP “Factory”

---

- Improvements
  - 2004 – web page to enter county op plans
    - Thanks Denny, KX7M
  - 2005
    - Web page log entry – WA6O
    - Continue with AD6E’s log checking software
    - Recruit one or two new log checkers

# WEB log entry

ContentRegion id=" \_headerMenubar"

ContentRegion id=" \_leftBar"

✓ [Step 1: Registration/Log In](#)  
✓ [Step 2: Log Submission](#)  
[Step 3: Review/Edit Log](#)  
[Step 4: Confirmation](#)

Here is the information you need to provide for log submission

If your log program output is in Cabrillo format you don't need to fill this form now - if some required information is missing we will ask you to fill up the following form *after* you upload the file. The data from your upload will be reflected in this form and you can change it later.

Any data entered in the form will have precedence over the data from the log.

## Welcome N6MJ

Please follow instructions on the left.

Qth:  Claimed score:

Name:  Operators:

Address:  Category:

Club:

Soapbox:

### Results Summary:

| Band         | CW QSOs     | CW QSOs (No Dupes) | Phone QSOs  | Phone QSOs (No Dupes) | Total       | Total (No Dupes) |
|--------------|-------------|--------------------|-------------|-----------------------|-------------|------------------|
| 10           | 114         | 114                | 339         | 335                   | 453         | 449              |
| 15           | 340         | 339                | 643         | 637                   | 983         | 976              |
| 20           | 304         | 303                | 471         | 464                   | 775         | 767              |
| 40           | 265         | 264                | 154         | 154                   | 419         | 418              |
| 80           | 97          | 96                 | 105         | 104                   | 202         | 200              |
| <b>Total</b> | <b>1120</b> | <b>1116</b>        | <b>1712</b> | <b>1694</b>           | <b>2832</b> | <b>2810</b>      |

We calculated your results from the data you submitted earlier (no cross-log checking has been done yet):  
 $(3 \times 1116 + 2 \times 1694) \times 58 = 390688$

### Issues

No issues were found in your in your last file uploaded.  
To upload a new log file click [here](#)

Copyright © 2005.

# CQP Operation

---

- All Volunteer “ARMY”
- Seems 2005 is the year of the new guard
  - W6ZZZ’s promotions and publicity
  - KO6LU – awards
  - WA6O, WX5S, KX7M - logging
- Special Note
  - AD6E
  - W6OAT – “guidance”
  - N6DE – sanity and clarity

# CQP - Thanks

---

- WK6I
  - Donating the wine
  - Making a very fine wine
- W0YK – so much!
- K6ENT – awards
  - And, all the plaque donors
- N6TV – county ops coordination
- The mailers (before and after)
  - AE6Y, AD6E, N6DE, W6ZZZ, N6EM, K6UFO, N6TV, K6IF
- Log checkers
  - AD6E, W6OAT, N6DE, WX5S, K6III, W6ISO, KX7M
- Participants



**73 and KB in CQP !**