

The Contest JUG



NEWSLETTER OF THE
NORTHERN CALIFORNIA CONTEST CLUB
34456 COLEVILLE PLACE
FREMONT CA 94546

JANUARY 1981

NUMBER 105

PRESIDENT: K6HNZ
DIRECTORS: WA6ITV, KN6M, WA6VEF

VP/CC: N6TV
JUG Post-Prod: AA6G

SCTY/TREAS: N6KB
JUG EDITOR: K6RU

ARRL DX GAME PLAN

COMING EVENTS

JANUARY MEETING PROGRAM: MYSTERIES OF THE NILE BY RUSTY, W6OAT; THE SS FROM KV4 BY BILL, N6OP; ISRAEL CQWW DXPEDITION BY BRUNO, AA6AD; NCCC ARRL DX PLANS.

JAN 23-25: CQ 160 METER CONTEST-CW FEB 21-22: ARRL DX CONTEST - CW
JAN 26: NCCC MEETING, HAYWARD FB/MR 27-1: CQ 160 METER CONTEST-PHONE
FEB 8 : NORTH AMERICAN SPRINT (SAT PM) MAR 7-8: ARRL DX CONTEST - PHONE

PRESIDENT KEN'S MESSAGE

HAPPY NEW YEAR. MAY 1981 BRING NEW SUCCESSES TO NCCC. WE FINISHED THE OLD YEAR WITH A GREAT CHRISTMAS BANQUET ORGANIZED BY TOM, N6BT. A BIG VOTE OF THANKS TOM FOR PLANNING THE EVENT AND SERVING AS MASTER OF CEROMONIES.

AS THE NEW YEAR GETS UNDERWAY OUR ATTENTION IS FOCUSSED ON THE ARRL DX CONTEST(S). THE BoD, BELIEVING THAT OUR CLUB NEEDS A SHOT IN THE ARM, HAVE VOTED TO ORGANIZE OUR CLUB EFFORT MORE FOR FUN THAN FOR MAXIMUM CLUB SCORE. WE KNOW THAT YCCC IS PLANNING A MAJOR EFFORT TO BEAT FRC, LAST YEAR'S CLUB WINNER (75M). THUS COMPETITION FOR THE NATIONAL TITLE WILL BE TOUGH AND POSSIBLY BEYOND US THIS YEAR. ORGANIZING THE NCCC INTO THREE TEAMS TO COMPETE AGAINST EACH OTHER WILL ALLOW EACH MEMBER TO DO HIS OWN THING IN THE CONTEST. IF YOUR STATION IS NOT SET FOR A BIG ALL-BAND EFFORT, NO MATTER. SINGLE BAND OPERATION AND LIMITED TIME (TVI?) EFFORTS WILL BE MOST WELCOME. PLAN TO PARTICIPATE, SUPPORT YOUR TEAM AND ENJOY THE CONTEST TO THE MAXIMUM. THE TEAM CAPTAINS OR THEIR COORDINATORS WILL BE CONTACTING ALL CLUB MEMBERS. THE INTRACLUB RIVALRY SHOULD FIRE THE COMPETITIVE SPIRIT OF ALL OF YOU TRUE CONTESTERS. MAYBE WE WILL SUPRISE THOSE EASTERNERS YET. THE TEAM LINEUPS AND SCORING ARE DETAILED IN THIS JUG. THE WINNING TEAM WILL BE DRINKING CHAMPAGNE AT THE NEXT AWARDS BANQUET.

AT OUR NEXT CLUB MEETING N6TV WILL PRESENT MORE DETAILS AND ANSWER QUESTIONS ABOUT THE ARRL DX CONTEST TEAM COMPETITION. ALSO ON THE PROGRAM WE WILL HEAR ABOUT THREE RECENT DXPEDITIONS BY NCCC MEMBERS. DON'T MISS THIS INTERESTING PROGRAM. NOTE: THE FEB. MEETING WILL BE DINNER, FRIDAY FEB. 27. DETAIL IN FEB. JUG.

SET ASIDE THOSE ARRL CONTEST WEEKENDS AND JOIN THE FUN.

73, KEN, K6HNZ

1980 ARRL DX COMPETITION

OFFICIAL INTRA-CLUB TEAM COMPETITION RULES

THE CLUB WILL BE DIVIDED INTO THREE TEAMS, WHOSE TEAM CAPTAINS ARE: MORI JUNG, KN6M; KEN KEELER, N6RO; CAM PIERCE, K6RU. THE TEAMS HAVE BEEN CHOSEN AS EVENLY AS POSSIBLE; EVERY ELIGIBLE MEMBER HAS BEEN PLACED ON ONE OF THE THREE TEAMS LISTED BELOW. MULTI OP STATIONS MAY "IMPORT" GUEST OPERATORS FROM OUTSIDE THE CLUB, PROVIDED THAT THE MULTI'S SCORE COUNTS FOR NCCC (I.E., TWO-THIRDS OF THE OPERATORS AT A MULTI MUST BE NCCC MEMBERS.

(CON'T-PAGE 2)

TEAM COMPETITION RULES (CON'T)

TEAM CAPTAINS WILL HAVE THE FOLLOWING RESPONSIBILITIES:

1. CHOOSE A TEAM NAME.
2. CONTACT EACH TEAM MEMBER.
3. INSURE THAT HIS TEAM HAS AT LEAST ONE ENTRANT IN EACH OF THE ENTRY CATEGORIES.
4. ORGANIZE AT LEAST 16 HOURS WORTH OF 2 METER NET CONTROL COVERAGE FOR EACH MODE
5. GATHER SCORES (SUMMARY SHEETS) FROM TEAM MEMBERS AND SUBMIT THEM TO VP/CC.

EVERY NCCC MEMBER IS ENCOURAGED TO SUBMIT AN ENTRY IN ONE OF THE FOLLOWING CATEGORIES. AT THE RIGHT OF EACH CATEGORY IS LISTED THE NUMBER OF POINTS TO BE AWARDED THE TEAM OF THE ENTRANT SUBMITTING THE HIGHEST SCORE IN THAT CATEGORY. POINTS WILL BE AWARDED TO OTHER TEAMS ON A PERCENTAGE OF HIGHEST SCORE BASIS. THE CATEGORIES ARE:

| <u>CATEGORY</u> | <u>Max. POINTS</u> | <u>CATEGORY</u> | <u>Max. POINTS</u> |
|---------------------|--------------------|--|--------------------|
| MULTI/MULTI | 100 | SINGLE OP/ALL BAND, LOW POWER | 25 |
| 2 XMTR MULTI/MULTI | 75 | SINGLE BAND 10, 15, 20, 40 | 25 |
| SINGLE-OP, ALL BAND | 50 | SINGLE BAND 80, 160 | 5 |
| MULTI/SINGLE | 50 | TEAM SUBMITTING MOST VALID DX REPORTS TO THE 2 M.NET (WR6ADM)..... | 25 |

SCORING EXAMPLE:

SUPPOSE N6BV WINS THE 20 METER SINGLE BAND CATEGORY WITH 100,000 POINTS, AND K6HIH COMES IN SECOND WITH 80,000 POINTS. N6BV'S TEAM WILL RECEIVE 25 POINTS AND K6HIH'S TEAM WILL RECEIVE $(80,000/100,000) \times 25 = 20$ POINTS. IF THEY ARE BOTH ON THE SAME TEAM IT WILL BE AWARDED 45 POINTS. EVERYBODY'S SCORE WILL COUNT FOR HIS TEAM. THE NUMBER OF POINTS AWARDED DEPENDS ON HOW CLOSE YOU COME TO THE FIRST PLACE FINISHER IN YOUR ENTRY CATEGORY.

EVERYONE AT A MULTI STATION WILL BE ON THE SAME TEAM, SO LAST MINUTE TRADES TO ACCOMODATE OPERATOR PREFERENCES WILL BE ALLOWED. HOWEVER, FINAL TEAM LISTS MUST BE SUBMITTED TO THE VP/CC NO LATER THAN 24 HOURS BEFORE THE START OF THE FIRST WEEKEND. GUEST OP AND STATION OWNER WILL ALSO BE ON THE SAME TEAM.

FINAL RESULTS WILL BE DETERMINED FROM THE OFFICAL RESULTS AS PUBLISHED IN QST. TEAM CAPTAINS MAKE SURE THAT EVERYONE GETS THEIR LOGS IN ON TIME!

AWARDS:

EACH MEMBER OF THE WINNING TEAM WILL RECEIVE A CERTIFICATE, AND THE HIGHEST SCORER IN EACH ENTRY CATEGORY WILL ALSO BE AWARDED A CERTIFICATE. ALL MEMBERS OF THE WINNING TEAM WILL WILL SHARE IN GIANT MAGNUMS OF CHAMPAGNE AT THE NCCC AWARDS BANQUET DEC. 1981. ALL PARTICIPANTS ARE ENCOURAGED TO SUBMIT THIER SCORES FOR NCCC. YOUR SCORE WILL STILL COUNT FOR THE NORTH/SOUTH TROPHY AT FRESNO.

I WILL BE HAPPY TO ANSWER ANY QUESTIONS ABOUT THE RULES, AND ARBITRATE ALL DISPUTES. ALL DECISIONS OF THE VP/CC (CONTEST COORDINATOR) ARE FINAL.

73, Bob, N6TV

NCCC 1981 ARRL DX CONTEST TEAMS

MORI'S MACHINE-KN6M CAPTAIN

| | | | |
|--------|--------|--------|--------|
| AA6AD | W6EEN | W6KZJ | K6PJY |
| K6AO | K6ERT | KN6M | WB6RAL |
| N6AUV | KB7F | N7MH | N6RZ |
| WA6AVS | WB6FCR | K6MYC | WB6SHD |
| WA4BAX | N6FJ | N6NE | K6SSJ |
| W6BIP | AA6G | N6NF | AA6T |
| N6BV | N7GM | W6NLZ | N6TU |
| N6CCN | WA6HKP | WB6NMU | AE6U |
| N6CKM | N6IG | N6NV | AJ6V |
| W6CNA | WB6ION | WA6OCV | WB6VSC |
| N6DA | WA6ITV | W6OKK | N6VV |
| WB6DHN | WA6KEQ | K6OMB | N6XI |
| WA6DJI | WB6KNU | W6OWQ | K6XV |
| N6DN | K6KWN | KR6P | KB6YF |

KEN'S KILLERS-N6RO CAPTAIN

| | | | |
|--------|--------|--------|--------|
| N6AMG | WD6DPL | KN6K | N6RA |
| K6AUC | WB6DSV | N6KB | W6RJ |
| K6AYA | AA6DX | WA6KXN | K6RM |
| W6BH | N6EK | W8KZH | N6RO |
| WA6BOB | WD6EQG | K9LBQ | K6RV |
| N6BSU | WB6GFJ | WA7LQO | K6SG |
| N6BT | K5GOE | N6MG | W6SZN |
| N6CCL | K6HNZ | N9NC | N6TA |
| W6CF | KF6I | W6NLG | KB6TL |
| K6CLV | K6ILM | W6OAT | WB6VEX |
| N6CT | WA6IQM | WA6OEC | WA6WEQ |
| KC6D | W6ISQ | N6OP | K6XM |
| WB6DHH | WA6JCZ | WB6POT | W6YKM |
| WA6DIL | N6JV | K6PU | K6ZM |

NCCC TEAMS (CON'T)
CAM'S SHAFTERS (SLIGHTLY OFF BALANCE AND A BIT ECCENTRIC)

| | | | | | | | |
|---------|--------|--------|--------|--------|--------|--------|-------|
| YD6AGJ | KA6CUG | N6GG | N6KL | N6OM | WB6RIU | A16V | N6ZB |
| W1ARR/6 | WB6DFX | N6GJ | K6KLY | W6PO | K6RU | WA6VEF | K6ZBV |
| WB6ASR | KB6DJ | KS6H | N6KT | K6OZL | K6SEM | W6WB | |
| KD6AZ | W6DPD | WA6HCI | W6MSF | K16P | W6SX | K6WJ | |
| K6BR | WD6EIZ | K6HIH | W6MYP | WB7PIJ | K6TG | KB6XN | |
| WA6BZT | WD6EPV | K6ITL | WA7NIN | WB6PYI | N6TV | K6XO | |
| N6CN | W6EZM | K1JH | W6NKR | N6QC | WB7TYF | W6XX | |
| K6CSL | W6GO | AA6KB | K160 | N6QW | AA6UO | N6YV | |

1980 NCCC AWARDS

1980 CONTESTER OF THE YEAR: K6RU 1980 ROOKIE OF THE YEAR: W6SZN

1980 CQP AWARD: WA6VEF

1980 SS AWARDS

CARL COOK SUPER SS AWARD: N6RO

MOST IMPROVED SCORE: K6OMB

MULTI-OP WINE AWARDS: AA6G (SSB)
W6BIP (CW)

JUGHEAD AWARD: WA6VEF

BIG GUN - SSB: WA7NIN

BIG GUN - CW: N6RO

LITTLE GUN - SSB: W7LQO

LITTLE GUN - CW: AJ6V

RED LONGJOHN AWARD: WA6VEF

KB2000 AWARDS

| | | |
|--------|-------|--------|
| N6BT | KN6M | A16V |
| WB6DSV | N6NF | WA6VEF |
| K6HIH | W6OWQ | W6XX |
| N6IG | N6RO | |

KB1000 AWARDS

| | | | | |
|--------|--------|--------|-------|-------|
| N6AUV | K6HNZ | WA7LQO | K6OMB | K6XO |
| W6BIP | WA6ITV | WA7NIN | K6SEM | K6XV |
| WA6DIL | N6KB | K160 | N6TV | W6YKM |
| AA6G | W8KZH | W6OKK | AJ6V | K6ZM |



SUPER SS AWARD: N6RO



CONTESTER OF THE YEAR: K6RU

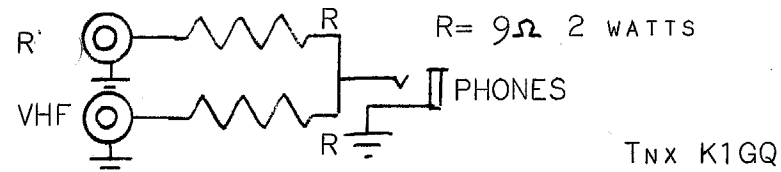


RED LONGJOHN AWARD: WA6VEF

MORE TEAM RULES- AWARDS

WINNERS OF ALL SINGLE OP CATEGORIES WILL BE AWARDED CERTIFICATES FOR EACH MODE. MULTI OP WINNERS WILL BE BASED ON COMBINED SCORES FROM BOTH MODES.

LISTEN TO WR6ADM SPOTTING NET AND DX AT THE SAME TIME - TRY THIS.



Tnx K1GQ

BoD MEETING: FEB 5 JUG DEADLINE: FEB 10

CAC REPORTS

THE FCC HAS DECIDED TO MAKE PERMANENT THE RULE REQUIRING COMMERCIALY MADE AMATEUR RADIO AMPLIFIERS TO BE TYPE ACCEPTED. IT PLANS TO RELEASE A NOTICE OF PROPOSED RULEMAKING ALLOWING MANUFACTURERS TO SUPPLY TO AMATEURS INSTRUCTIONS FOR MODIFYING AMPLIFIERS ALREADY PURCHASED TO OPERATE IN THE 28 MHz BAND.

QUESTION- SHOULD WE SPLIT THE MD/DC SECTION INTO TWO SECTIONS, THUS ADDING A SECTION FOR PURPOSES OF CONTEST MULTIPLIERS? WE WILL DISCUSS THIS IDEA BRIEFLY AT THE NEXT NCCC MEETING.

73, ALAN, K6XO

4

ETD

ALPHA



77DX



374A



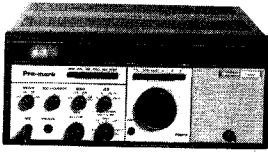
76A

**CONTEST
KEYER**

THE NEW LOW COST AEA
MEMORY KEYER MODEL CK-1
WILL MAKE YOU MORE
COMPETITIVE THAN EVER!

COLLINS KWM-380

BEAT THE
PRICE
INCREASE
while they last



CUBIC/SWAN ASTRO 103



Ask for details,
prices.

New commercial grade trans'vr
provides full 9 band coverage.

FREE SHIPMENT (UPS Brown)

OVER-THE-COUNTER
Mon. thru Sat. 10AM to 5:30PM

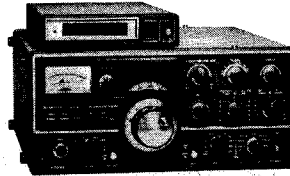
AEA • ALLIANCE • ALPHA • AMECO • AMPHENOL • ARRL • ASTRON
• AVANTI • BENCHER • BERK-TEK • BIRD • B&W • CALLBOOK • CDE
• COLLINS • CURTIS • CUSHCRAFT • DAIWA • DATONG • DENTRON
• DRAKE • DX ENGINEERING • EIMAC • HUSTLER • HY-GAIN • ICOM
• J.W.MILLER • KENWOOD • KLM • LARSEN • LUNAR • METZ • MFJ
• MICRO-LOG • MINI-PRODUCTS • MIRAGE • MOSLEY • NYE
• PALOMAR • ROBOT • ROHN • SHURE • SWAN • TEMPO • TELEX
• TELREX • TEN-TEC • TRISTAO • YAESU and many more!

KENWOOD

TS-830-S



TS-520SE



TR-2400
2 METER
HAND-
HELD



TS-130-S



OAKLAND, CA 94609

2811 Telegraph Ave., (415) 451-5757
Hwy 24 Downtown. Left 27th off-ramp.

BURLINGAME, CA 94010

999 Howard Ave., (415) 342-5757
5 miles south on 101 from S.F. Airport.

THE CONTEST JUG-PUBLISHED MONTHLY BY
THE NORTHERN CALIFORNIA CONTEST CLUB
34456 COLEVILLE PLACE
FREMONT, CA 94536

FIRST CLASS
FIRST CLASS
FIRST CLASS

NCCC TEAMS (CON'T)
CAM'S SHAFTERS (SLIGHTLY OFF BALANCE AND A BIT ECCENTRIC)

| | | | | | | | |
|---------|--------|--------|--------|--------|--------|--------|-------|
| YD6AGJ | KA6CUG | N6GG | N6KL | N6OM | WB6RIU | A16V | N6ZB |
| W1ARR/6 | WB6DFX | N6GJ | K6KLY | W6OPO | K6RU | WA6VEF | K6ZBV |
| WB6ASR | KB6DJ | KS6H | N6KT | K6OZL | K6SEM | W6WB | |
| KD6AZ | W6DPD | WA6HCI | W6MSF | K16P | W6SX | K6WJ | |
| K6BR | WD6EIZ | K6HIH | W6MYP | WB7PIJ | K6TG | KB6XN | |
| WA6BZT | WD6EPV | K6ITL | WA7NIN | WB6PYI | N6TV | K6XO | |
| N6CN | W6EZM | K1JH | W6NKR | N6QC | WB7TYF | W6XX | |
| K6CSL | W6GO | AA6KB | K16O | N6QW | AA6UO | N6YV | |

1980 NCCC AWARDS

1980 CONTESTER OF THE YEAR: K6RU 1980 ROOKIE OF THE YEAR: W6SZN

1980 CQP AWARD: WA6VEF

1980 SS AWARDS

CARL COOK SUPER SS AWARD: N6RO

MOST IMPROVED SCORE: K6OMB

MULTI-OP WINE AWARDS: AA6G (SSB)
W6BIP (CW)

JUGHEAD AWARD: WA6VEF

BIG GUN - SSB: WA7NIN

BIG GUN - CW: N6RO

LITTLE GUN -SSB: W7LQO

LITTLE GUN - CW: AJ6V

RED LONGJOHN AWARD: WA6VEF

KB2000 AWARDS

| | | |
|--------|-------|--------|
| N6BT | KN6M | A16V |
| WB6DSV | N6NF | WA6VEF |
| K6HIH | W6OWQ | W6XX |
| N6IG | N6RO | |

KB1000 AWARDS

| | | | | |
|--------|--------|--------|-------|-------|
| N6AUV | K6HNZ | WA7LQO | K6OMB | K6XO |
| W6BIP | WA6ITV | WA7NIN | K6SEM | K6XV |
| WA6DIL | N6KB | K16O | N6TV | W6YKM |
| AA6G | W8KZH | W6OKK | AJ6V | K6ZM |



SUPER SS AWARD: N6RO



CONTESTER OF THE YEAR: K6RU

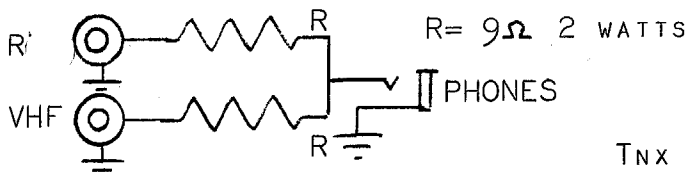


RED LONGJOHN AWARD: WA6VEF

MORE TEAM RULES- AWARDS

WINNERS OF ALL SINGLE OP CATEGORIES WILL BE AWARDED CERTIFICATES FOR EACH MODE. MULTI OP WINNERS WILL BE BASED ON COMBINED SCORES FROM BOTH MODES.

LISTEN TO WR6ADM SPOTTING NET AND DX AT THE SAME TIME - TRY THIS.



R= 9Ω 2 WATTS

Tnx K1GQ

CAC REPORTS

THE FCC HAS DECIDED TO MAKE PERMANENT THE RULE REQUIRING COMMERCIALY MADE AMATEUR RADIO AMPLIFIERS TO BE TYPE ACCEPTED. IT PLANS TO RELEASE A NOTICE OF PROPOSED RULEMAKING ALLOWING MANUFACTURERS TO SUPPLY TO AMATEURS INSTRUCTIONS FOR MODIFYING AMPLIFIERS ALREADY PURCHASED TO OPERATE IN THE 28 MHz BAND.

QUESTION- SHOULD WE SPLIT THE MD/DC SECTION INTO TWO SECTIONS, THUS ADDING A SECTION FOR PURPOSES OF CONTEST MULTIPLIERS? WE WILL DISCUSS THIS IDEA BRIEFLY AT THE NEXT NCCC MEETING.

73, ALAN, K6XO

BoD MEETING: FEB 5 JUG DEADLINE: FEB 10

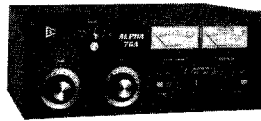
4

ET0

ALPHA



77DX



76A



374A

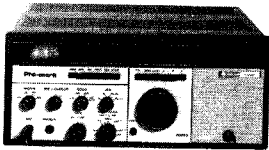
CONTEST KEYS

THE NEW LOW COST AEA MEMORY KEYSER MODEL CK-1 WILL MAKE YOU MORE COMPETITIVE THAN EVER!



COLLINS KWM-380

BEAT THE PRICE INCREASE while they last



CUBIC/SWAN ASTRO 103



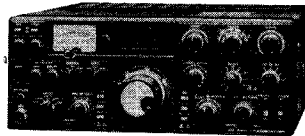
Ask for details, prices.

New commercial grade transcvr provides full 9 band coverage. FREE SHIPMENT (UPS Brown)

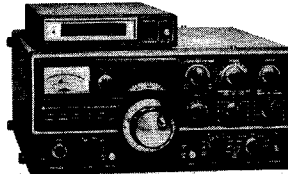
OVER-THE-COUNTER Mon. thru Sat. 10AM to 5:30PM

KENWOOD

TS-830-S



TS-520SE



TR-2400 2 METER HAND-HELD



TS-130-S



OAKLAND, CA 94609

2811 Telegraph Ave., (415) 451-5757 Hwy 24 Downtown. Left 27th off-ramp.

BURLINGAME, CA 94010

999 Howard Ave., (415) 342-5757 5 miles south on 101 from S.F. Airport.



THE CONTEST JUG-PUBLISHED MONTHLY BY THE NORTHERN CALIFORNIA CONTEST CLUB 34456 COLEVILLE PLACE FREMONT, CA 94536



FIRST CLASS
FIRST CLASS
FIRST CLASS

W60AT Expires 06/81
Mr. Charles K. Epps
5-A Buena Vista Terrace
San Francisco, CA 94117