

The

JUG



3 REPEATERS W6RGG/R
147.24,(+), 444.200 (107.2 PL)

Presidential Pen de AA6KX

CONTEST SEASON AGAIN!



Well, the summer was nice and the weather surely was wonderful. But now it's almost over. We hope you took advantage of the lull in activity on the bands to get your station in order. Because in just a few short weeks it will be time to put it all to the test. The kick-off for the season is, of course, NCCC's own CALIFORNIA QSO PARTY.

From a very modest beginning in 1966, when the event was first organized by high-schoolers Tom, WB6KIL (now K1KI, a ARRL VP) and Chris, WB6EUZ, this annual event has grown in popularity year after year. It is now the biggest and most popular of the state QSO parties. Top contesters from all over the US and Canada use it as an opportunity to check out their equipment and hone their operating skills. And it's a good thing, too, because it gives us "suffering sixes" a chance to pretend to be rare DX for one weekend a year. Last year we received 160 CQP log submissions from California stations. Of those, 20 logs showed a clean sweep of all 58 states and provinces and 26 had 1000 or more QSO's in the log. And that was actually down slightly from the year before, when 157 California entries netted 26 sweeps and 34 logs with 1000+ QSO's. That's a lot of activity for us, but what's in it for the non-California stations? Well, for starters, 17 non-California stations managed to find all 58 California counties in last year's CQP. From there it's a "simple matter of postage" to get the cards to qualify for the coveted "Worked All California Counties" Award (also sponsored by the

(President con't page 2)

Next Meeting September 16, Livermore

N6IP and KF6VU teamed up and found an excellent East Bay location for our September meeting. It's a great meeting room, can accommodate up to 100 people and they won't turn the air conditioning off just to get us out! The location has easy access for our East Bay and Sacramento Valley members.

Date: Friday, September 16, 1994

Time: Pizza at 6:30 p.m.,

Meeting at 7:15 p.m.

Location: Livermore City Council Chambers, 3575 Pacific Avenue, Map page 2 Talk-in Freq 147.12+
Program: We'll start with pizza and soft drinks. Tab about \$6-\$7 per person.

First on the agenda will be a CQP kick-off. Who is going to which county? When should you take your off times? What frequencies should you work? Perennial top-scorer (well, high-scorer) N6TV will be there to coordinate county expeditions and offer insight into how to win your very own personalized bottle of NCCC Private Reserve Red. Next on the agenda, we'll have a LOGGING SOFTWARE SHOOT-OUT. We've rounded up some of the Club experts on

(Meeting con't page 2)

Upcoming Contests

de N6IP

All from QST unless otherwise noted

September

10-11	NA Sprint CW	Aug. p.101
	Eu DX Ph	Jul. p.126
	ARRL VHF QSO	Aug. p.100
17-18	NA Sprint Ph	Aug. p.101
	Scandinavian CW	Sep. p.125
	QRP Afield	Sep. p.125
	ARRL 10GHz Cumltv	Aug. p.101
24-25	CQWW RTTY	Aug. p.101
	Salmon Run	Sep. p.125
	Classic Radio	Sep. p.125
	Scandinavian Ph	Sep. p.125

October

1-2	California QSO Party	JUG, Inside
	VK/ZL Ph	Sep. p.125
	RSGB 21/28 Ph	Sep. p.125
8-9	VK/ZL CW	Sep. p.125
	IL QSO	Sep. p.126
	PA QSO	Sep. p.126
	Ibero-Americano	Sep. p.126
15-16	JARTS WW RTTY	Sep. p.126
	ARCI CW	Sep. p.126
	RSGB 21MHz CW	Sep. p.126
	Boy Scout JOTA	Sep. p. 96
22-23	Prepare for Sweepstakes!	
29-30	CQWW Ph	Sep. p.126
	ARRL EME	Sep. p.128

If you haven't renewed, don't blame the mailman when you don't get a JUG next month. Instead, SEND YOUR DUES To Treas.AA6MC

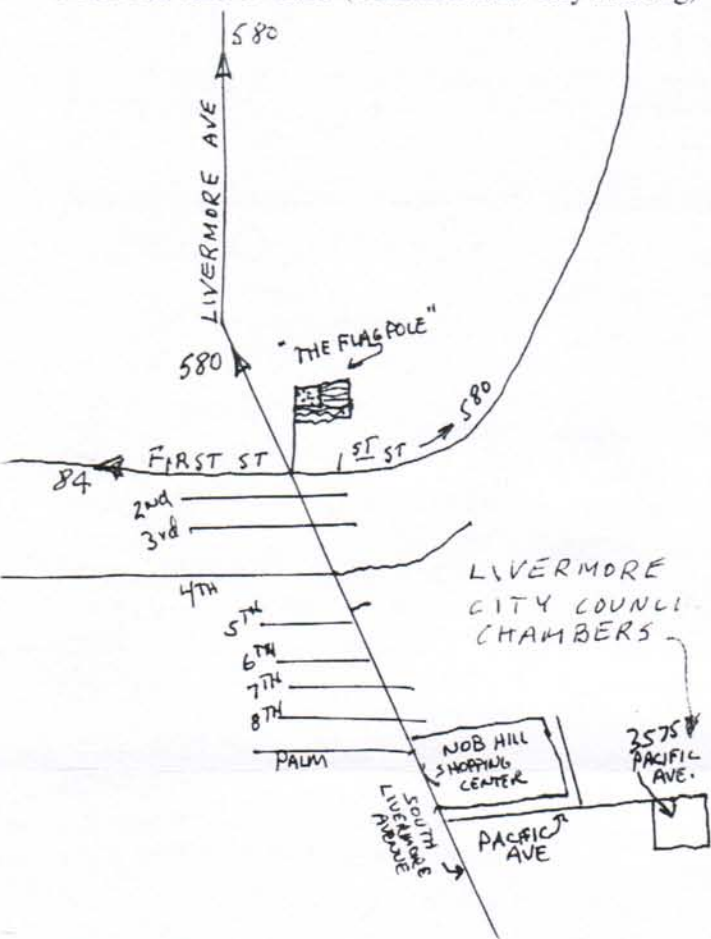
Directions and Map Next Meeting

Talk-in Freq 147.12+

From 580 heading east, take Livermore Ave south.

From 580 heading south, take First St. south.

From 680 take 84 east. (ed. note: looks very winding)



(Meeting, con't) logging software for CQP and SS. Each will have his own computer in his own corral right there Youcango from system to system, see demos, question, even hands on. There will be CT Version 9, NA Version 9, N6TR's logging program, WriteLog for Windows, AE6Y's contest logging program, and AD6E's software. AE6Y and AD6E give away (as in \$0) their software. Bring 3-1/2" disk.

NORTHERN CALIFORNIA CONTEST CLUB

President: Bruce Sawyer AA6KX

Vice-President/Contest Chr: Bob Wolbert, N6IP

Sec/Treas: Dick Dievendorff, AA6MC

Directors: Al Maenchen, AD6E

Dave Leeson, W6QHS

Steve Thomas, N6ST

Bob Wilson, N6TV

JUG Editor John Troster, W6ISQ

82 Belbrook Way Atherton, Ca., 94027

Publisher, Maggie Troster, KC6NFE

The JUG is the official journal of the NCCC, published monthly. Copies are mailed to members whose dues are up-to-date. Material submitted for publication must be received no later than the last Monday of each month.

(President con't from Page 1)

NCCC, by the way). Besides the award, the prize of a personalized bottle of NCCC Private Reserve (thanks to W6OSP) is a highly sought-after trophy. But whether they're working for WACC, a bottle of wine, a T-shirt, or just the fun of it, a lot of stations have decided this state QSO party is worth the effort. Last year saw 215 formal log submissions from outside of California. And, by the way, that was without any publicity help from either QST or CQ. We've done a better job of getting publicity for CQP this year and we expect the activity level to be even higher.

Whether you go it alone or as part of a group, there are three basic ways you can run this fun contest: from a fixed station, as a county expedition, or as a mobile operation. Each has different advantages (and some disadvantages) and each is different in character from the others. Separate awards are given for each category.

Fixed station operation usually entails the power and convenience of having all of your station equipment and all of the aluminum and wire you labored to erect. For most people, it's a challenge to go on the road and have a better signal than at home. Plus, you have the advantages of warmth, light, clean sheets, hot food, etc. But you still get to be DX, because all those non-California stations out there are looking for YOU!

A county expedition is a lot like ARRL Field Day, only more exciting. For people in suboptimal locations, this is the chance to go out and set up on top the world, where you can make eyeball contact as far as New Jersey. It's truly amazing how little antenna you need when you're sitting at the top edge of a 3000' cliff. (The Plumas/Lassen county line, above Honey Lake, fits this description, by the way.) It's not a difficult feat to place yourself on a mountain peak as the only station in the contest from a rare county. Then anybody who wants a decent score has got to find you. Talk with County Coordinator N6TV, and Bob can fix you right up with your own county.

Mobile operation opens up even more opportunities than does a county expedition. You can map out a sequence of great spots and go spend a few hours at each. Every year there are counties that get overed only because some mobile operators went on the circuit. I've discovered that a lot of the very best sites already have an occupant: a U.S. Forest Service lookout. As a mobile operator, you can drive right up to the lookout and operate from the "parking lot" without censure. Check out the Mill's Peak Lookout, on the Plumas/Sierra line, 14.4 miles northeast of Downieville (if you're a crow) as an example.

I've found dozens of super CQP sites this summer. I found at REI in Sunnyvale, a two-volume set of topographical maps covering ALL of California. It takes something like this to find all the Forest Service roads, logging roads, and jeep trails that will carry you to the very best of CQP spots. But whether on the road or at home, don't miss CQP. When the dust settles, you're sure to earn the 1994 CQP T-shirt and may even get that cherished bottle of CQP Red. Besides, CQP is good practice

WOLBERT'S WORDS

The '94-'95 Contest Season Begins

The first round of the NCCC Triple Crown, the California QSO Party is the first weekend of October (1-2). This is the traditional start of the contest season, so be sure to get on and have a blast. N6TV invites you to "reserve your county": Bob is leading the charge to activate all 58 counties again this year. Let him know where you'll be operating, especially if you are expeditioning.

Congratulations to our contest winners: KI6CG for 1st place W6 in CQWW Phone '93, W6RJ for #2 US on 75m (#1 CA), K6KM for top W6 on 15m, and K6HNZ for #1 CA on 40m. And N6GG placed 15th in the 1994 BARTG HF RTTY Contest (first place Western North America, I think!).

"Area coordinators" needed. We need some folks willing to shake the bushes to get everyone active for CQP and SS this year. In the past, a telephone tree has worked very well. If you'd like to help by simply making a few telephone calls, please let me know ASAP. I need about twelve volunteers.

What is the "Jughead" Award? The Jughead Award is presented to the NCCCer who makes the most QSOs with other NCCCers during Sweepstakes. This year, we've convinced our beloved editor, ISQ Jack, to resurrect this award on the condition that I do the tallying. To enter, send me your SS dupe sheet with NCCCers circled or highlighted. This coveted award will be presented at our March awards banquet.

August Scores:

North American QSO Party

Station	QSOs	Mult	Total
WA6SDM	195	64	12,480
N2ALE	31	21	651

SARTG RTTY

Station	QSOs	Mult	Total
WA6SDM	58	40	26,400
N2ALE	15	15	2,325



DUAL DIVERSITY TOPSIDE AT W1FEA'S?

Book Review de KC6NFE '94 Sweepstakes Handbook

Best Sellers, catch this! The new Edition of the NCCC Sweepstakes Handbook in its first week of publication, is already in its second printing. The first printing was a sell-out (so to speak) at the picnic, where author Bob Wolbert N6IP handed them out, only to carefully verified, members. They're free to NCCC'rs inside the NCCC 175 mile circle, with two bucks (\$2) to cover costs if you have it mailed to you. A bargain that's not only good, but true too.

This handbook is a 46 page re-write and update of the one Bill Zachary wrote for NCCC some years ago. Not work of fiction, but facts, just the facts, ma'm. In fact, (sic) it's a manual, valuable to all levels of hamming, to which hams at successful levels have contributed articles of tested ideas, suggestions, diagrams and more, much more. Plenty of excellent tips and tricks to have at the ready when the SS starts, but this handbook also gets you to the starting line with antenna designs, station layouts, and operating plans. Written concisely and well, laced with IP Bob's dry wit and humor, it's a good read as well as a must have. The cartoon on the back page alone, is worth the price of the postage. Get in the loop and on the ball, place your order now, coupon below.

Send me a copy of the NCCC Sweepstakes Handbook. I am enclosing \$2 for postage expenses. I am an in-region member and my Sweepstakes log(s) will be credited to the Northern California Contest Club.

Callsign: _____ Signature: _____ (required) Address: _____

Mail to: N6IP, 10028 Bon Vista Ct. San Jose, CA 95127 .Bob Wolbert

1994 California(CA) QSO Party (CQP) Sponsored by the Northern California Contest Club

Begins: 1600 UTC - 1 October 1994

Ends: 2200 UTC - 2 October 1994

OBJECT: Stations outside of California work as many California stations in as many CA counties as possible. Stations in California work anyone.

EXCHANGE: California stations send QSO number and county. Stations outside of California send QSO number and State, Province, or Country.

QSO POINTS: Each complete non-duplicate Phone contact is worth 2 points. Each complete non-duplicate CW contact is worth 3 points. No partial contact credit. Duplicate contacts must be clearly identified in log.

MULTIPLIERS: California stations count states (50) and Canadian Provinces (VO/VE1-7 and VY1/VE8) for a possible total of 58. All others use California counties for a maximum of 58. California stations on a county line may be claimed as a multiplier for any or all of the counties they give in their exchange. Number each multiplier as worked.

SCORE: The total score is the total number of QSO points multiplied by the total number of multipliers (58 Maximum).

FREQUENCIES: 160, 80, 40, 20, 15, 10, 6, and 2 Meters. WARC band contacts do not count. CW on 1805 and 40 KHz up from band edge. Phone on 1850, 3850, 7230, 14250, 21300, and 28450 KHz. Novices 10 KHz up from band edge and 28450.

Try CW on the half hour.

Try 160 meters at 0500 UTC; 80/75 meters at 0300 and 0700 UTC.

Try 147.54 MHz at 2000, 0000, and 0400 UTC.

ENTRY CLASS: Single Operator, Multi-Single, Multi-Multi, California County Expedition, Mobile, and Novice/Technician.

- Single Operator entries limited to 24 hours maximum; off times must be clearly marked in the log and be a minimum of 15 minutes.
- Multi-Operator entries may operate the full 30 hours.
- Stations may be worked once on CW and once on Phone per band.
- Single Operator and Multi-Singles entries are allowed only one transmitting signal.
- All CW contacts must be made in the CW sub-band except for 160 Meters. MCW is not permitted.
- All contacts must be simplex.
- California stations that change counties are considered to be a new station and may be contacted again for point and multiplier credit. California stations operating on a county line may be counted only as one QSO.

ENTRIES: All logs and signed summary sheets must be submitted to **NCCC, c/o Ken Anderson, K6PU, Box 853, Pine Grove, CA 95665**. Entries may be submitted in CT Version 8 or 9 format with .SUM and .ALL files on 5 1/4 or 3 1/2 diskettes (no 2.88M diskettes) with a signed hardcopy summary sheet. Label each diskette with call, entry category and state/county/province/country. All entries must be postmarked no later than 15 November 1994. Please include \$1.00 for results if desired. Entries with 100 or more QSO's qualify for the special CQP T-shirt; include your size (L/XL) and \$8 (includes results) if you qualify and would like this special award. Entries of 200 or more QSOs must include duplicate check lists. For a CQP paperwork package containing log and summary sheets, county abbreviations, and contest records, send a business size SASE to the above address.

AWARDS: Certificates - To top Single Op entry in each CA county, state, province, country, and stations with 100 or more QSOs.

Trophies - To top three non CA Single-Op entries, top three CA Single-Op, top CA Multi-Single, top CA Multi-Multi, top Single and Multi-Op CA County expeditions.

Special CQP Wine Award - The top 20 CA and top 20 Non-CA Single-Op operators will receive a personalized bottle of NCCC Private Reserve California Wine. Winners under the age of 21 will receive a non-alcoholic personalized award.

Special Awards - To the CA and non-CA Single-Ops with the most QSOs, to the CA and non-CA Single-Ops with the most CW QSOs, to the Mobile Single-Op or Team with most total QSOs, to the top CA and non-CA Single-Op low power entries (200 watts or less output), to the top CA and non-CA Single-Op Novice/Technician entries, to the top scorer outside of the USA and Canada, and to the top club in California (5 entries minimum - NCCC and SCCC are ineligible).

NCCC
c/o Ken Anderson, K6PU
Box 853
Pine Grove
CA 95665-0853

Mailing label

Deadline 15 Nov. 94

September '94 Jug page 4

Call _____ County/State/Province/Country _____

BAND	QSO s		TOTAL COMBINED QSOs
	CW	PHONE	
160			
80			
40			
20			
15			
10			
6			
2			
TOTAL MODE QSOs			

- CLASS (check all that apply)
- Single Operator
 - Multi-Single
 - Multi-Multi
 - California County Expedition
 - Mobile
 - Novice/Technician

Operator(s) _____

Power level L___ H___
(Low power is 200 watts or less output)
Club Competition(5 logs minimum)

MODE QSO POINTS	X3	X2

TOTAL POINTS

TOTAL MULTIPLIER X _____ Maximum 58

FINAL SCORE = _____

\$1.00 Enclosed for results

or

\$8.00 Enclosed for T-shirt and results

Size? L___ XL___

(Non-CA stations please check off counties as worked and submit with your log.)

Alameda	Ala	Marin	Marn	San Mateo	SM
Alpine	Alp	Mariposa	Marp	Santa Barbara	SBar
Amador	Ama	Mendocino	Mend	Santa Clara	SCla
Butte	Butt	Merced	Mer	Santa Cruz	SCrz
Calaveras	Cala	Modoc	Modo	Shasta	Shas
Colusa	Col	Mono	Mono	Sierra	Sie
Contra Costa	CCos	Monterey	Mont	Siskiyou	Sisk
Del Norte	DelN	Napa	Napa	Solano	Sol
El Dorado	Eld	Nevada	Nev	Sonoma	Son
Fresno	Fres	Orange	Org	Stanislaus	Stan
Glenn	Glen	Placer	Pla	Sutter	Sut
Humboldt	Humb	Plumas	Plu	Tahama	Teh
Imperial	Imp	Riverside	Riv	Trinity	Trin
Inyo	Inyo	Sacramento	Sac	Tulare	Tul
Kern	Kern	San Benito	SBen	Tuolumne	Tuol
Kings	King	San Bernardino	SBer	Ventura	Vent
Lake	Lake	San Diego	SDgo	Yolo	Yolo
Lassen	Las	San Francisco	SF	Yuba	Yuba
Los Angeles	LAX	San Joaquin	SJoa		
Madera	Mad	San Luis Obispo	SLO		

Name _____

Mailing Address: _____

Tel # _____

Over 21? Y___ N___ Age(optional) _____

Signature _____ Date _____

Multiplier Abbreviations for California Entries
(CA Stations - Please check off multipliers worked and submit with your log)

Alabama	AL	Massachusetts	MA	South Dakota	SD
Alaska	AK	Michigan	MI	Tennessee	TN
Arizona	AZ	Minnesota	MN	Texas	TX
Arkansas	AR	Mississippi	MS	Utah	UT
California	CA	Missouri	MO	Vermont	VT
Colorado	CO	Montana	MT	Virginia	VA
Connecticut	CT	Nebraska	NE	Washington	WA
Delaware	DE	Nevada	NV	West Virginia	WV
Florida	FL	New Hampshire	NH	Wisconsin	WI
Georgia	GA	New Jersey	NJ	Wyoming	WY
Hawaii	HI	New Mexico	NM	VO-VE1	
Idaho	ID	New York	NY	Maritime	MAR
Illinois	IL	North Carolina	NC	Quebec	Que
Indiana	IN	North Dakota	ND	Ontario	ONT
Iowa	IA	Ohio	OH	Manitoba	MAN
Kansas	KS	Oklahoma	OK	Saskatchewan	SK
Kentucky	KY	Oregon	OR	Alberta	ALTA
Louisiana	LA	Pennsylvania	PA	British Col.	BC
Maine	ME	Rhode Island	RI	NWT/Yukon	NWT/Yuk
Maryland/DC	MDC	South Carolina	SC		



CALLSIGN _____

COUNTY/STATE/PROV/CNTRY _____

DATE	BAND	MODE	UTC	STATION	SENT	RECEIVED		MULT	PTS
					NR + ↓	NR	CTY/ST/PROV/CNTRY		
					1				
					2				
					3				
					4				
					5				
					6				
					7				
					8				
					9				
					0				
					1				
					2				
					3				
					4				
					5				
					6				
					7				
					8				
					9				
					0				
					1				
					2				
					3				
					4				
					5				
					6				
					7				
					8				
					9				
					0				
					1				
					2				
					3				
					4				
					5				
					6				
					7				
					8				
					9				
					0				
					1				
					2				
					3				
					4				
					5				
					6				
					7				
					8				
					9				
					0				

Number each multiplier as worked

CW QSOs = 3 Points Phone QSOs = 2 Points

Audio-Based Digital Signal Processors

de Bob Wolbert, N6IP

After listening to Larry, NF6S's excellent presentation on the Timewave DSP-59 at a NCCC meeting last winter, I rushed over to HRO and ordered one. It was out of stock because Timewave was introducing the newer version, the DSP-59+. While I waited, I tried the brand new Timewave DSP-9+, lower cost, fewer bells & whistles. Then Radio Shack produced the DSP40 with a really low price—I got one of these too. I used these three DSP boxes in WPX CW, All-Asian CW, IARU (CW and phone), an Internet Sprint, and for general operation. In this unscientific comparison, I'm not going to discuss the DSP function technically; instead, I'll tell you how it works (or otherwise) for me.

same DSP and analog pre/post processing ICs. Their difference is in the user interface. The DSP-59+ has two knobs that set center frequency and bandwidth for CW/FSK, or low cut/high cut for phone (just like Kenwood's Slope Tuning). The DSP-9+ uses push buttons and has a few (three CW, three phone, three FSK) fixed bandwidths. Three choices of CW center frequency are available. The Plus versions are improvements over the original boxes, adding power-off bypass and a rudimentary AGC to the firmware upgrade. The Radio Shack DSP40 is designed for SWLs or phone-onlies. I claim it is not useful for CW because it has a fixed center frequency (750 Hz)

the good quality audio filters we've had for years. Like all audio filters, their major drawback is the lack of AGC feedback into the IF portion of the receiver. This lets offending signals (that you cannot hear because the filter is doing its job) capture the AGC and cause undesirable results. The audio output will pump up and down as the strong QRM comes and goes. The DSP boxes are a huge improvement over the audio bandpass or notch filters because they can automatically find and eliminate heterodynes and have nearly brick wall skirts. Additionally, DSPs can implement active noise cancellation (the feature I really wanted).

Tone Reduction. All three boxes do a

This table compares these DSPs. Power consumption was measured at a moderate audio output level and differs from the manufacturer's specification sheets.

TIMEWAVE DSP-59+

\$300

All Modes

Tone Notch

Adjustable Slope Filters, high & low
(for all modes)

(3 selected from panel,
others are jumper selected)

Bandpass Filters w/ adjustable center freq.
and bandwidths (multiple of each)
(for all modes) plus center frequency
marker

RTTY, AMTOR, PACTOR

Random Noise Reduction

Adjustable "Aggressiveness"

for noise reduction (SSB only)

170mA @ 12.5V

Power-OFF Bypass

A "keeper"

TIMEWAVE DSP-9

\$220

All Modes

Tone Notch

Several Bandpass filters
for phone & CW, plus

Selectable Dedicated CW
filters with 3 bandwidths and
4 center frequencies (internal
jumper selection)

Random Noise Reduction

Adjustable "Aggressiveness"

for noise (SSB only)

170mA @ 12.5V

Power-OFF Bypass

power & audio cables

A "keeper"

RADIO SHACK DSP40

\$80

Phone, some CW

Tone Notch

3 SSB Filters

Fixed 750 Hz CW filter with
3 bandwidths

Random Noise Reduction

130mA @ 12.5V

Internal Speaker, Includes

Good price, but throw it back...

The DSP's active noise reduction features were their major allure. Sharp audio filters were not important to me since my rigs run cascaded crystal filters. Tone reduction was considered a curiosity that might be interesting during my limited periods of phone operation. Keep my initial prejudices in mind when you read this; your own situation and results may vary!

The two Timewave boxes are nearly identical, schematically. Both use the

and three poorly chosen bandwidths (300 Hz, too wide, and WAY too wide). It does not have FSK filters. At least its connectors are the proper type; the DSP40 fit into my station without requiring any new cables (except its headphone jack is mono instead of stereo). Because of its inadequacies, I never used it in any contest (and returned it for a refund).

The DSP in Operation. Running a DSP is basically similar to using any of

great job of squelching carriers, such as tuner-uppers. A few milliseconds after the tone appears, it simply disappears. **Filter Characteristics.** All three boxes have ring-free brick wall (sharp) filters. CW signals simply fall off a cliff when they get a few hertz outside the chosen bandwidth.

Noise Reduction Noise reduction is how the DSPs separated the dollars from my wallet. How do they work? It depends! (DSP con't page 8, Col 1)

(DSP, con't from page 7) On some noise types, they're great. The Timewaves suppress several types of power line noise nicely. Some kinds are unaffected. Static crashes on low bands are mostly ignored by the processor. During its short stay in my shack, the Radio Shack DSP cut only one type of repetitive noise, with zero effect on any other. I logged about ten QSOs during the past months that I wouldn't have without a DSP.

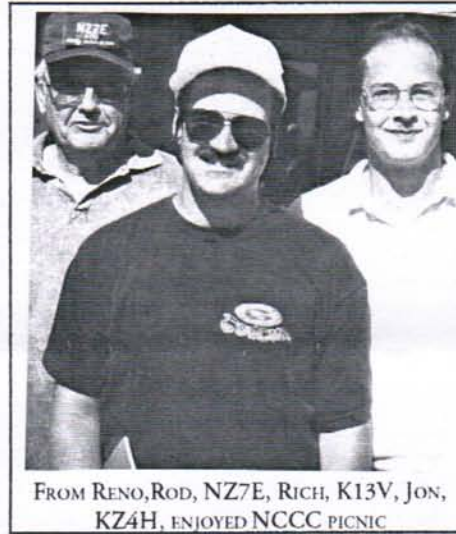
There is a drawback to DSP noise reduction. The manufacturers call it artifacts. The processing subtracts some signal along with the noise, thereby distorting it. Timewave has selectable aggressiveness levels for the noise reduction, so you can reduce processing distortion artifacts by compromising noise reduction effectiveness.

General Comments. When the DSP is plugged in, you must adjust your audio output level so that peak signal is full-scale on the DSP's analog-to-digital converter. After it's set, you control audio level to your speaker or headphones with the DSP's audio level pot. The first trick you need to learn is to avoid twisting your rig's audio gain control and instead, use the DSP's for audio volume changes. I find this hard to remember. For example, K2MM called me during a JA run where signals were weak and slight power line noise was evident. I had forgotten rule #1 and was setting volume with the rig instead of the DSP. John's much stronger signal blasted through the DSP, producing really interesting audio garbage. It took a couple of seconds to readjust the controls so I could copy him. It's embarrassing when you need a repeat from a 40db/S9 signal! During the last Internet Sprint, power line noise was a big problem. The rig's noise blanker took it out completely, but disrupted the dynamic range so much that AA6KX appeared everywhere across the band. For whatever reason, the Timewave was unsuccessful at battling this particular type of line noise. After several attempts at tweaking the controls, I bypassed the DSP and decided to live with the line noise. You need to play with the DSP to

Bulletin Board

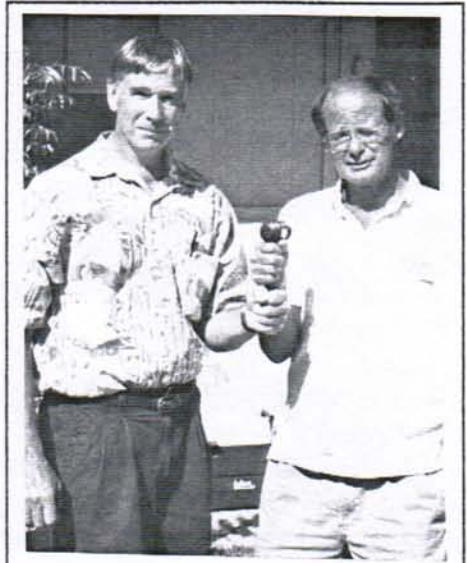
⇒ CQP, That's the password and the pay-attention word. This is the JUG that carries the word, telling you you've needed to get in there and give it your best go! Info and forms are on pages four, five and six of this issue.

⇒ If N6TV is looking strained these days., why not? He's booking 58 California Counties. They're going fast but they're not all taken. Mail Man AI, AD6E, has sent out 212 letters to CA hams asking where they're going or would like to go, to put a county on the air. He will also mail out over 300 letters to out-of-state ops reminding them of the BIG SHOW and all the prizes.



FROM RENO, ROD, NZ7E, RICH, K13V, JON, KZ4H, ENJOYED NCCC PICNIC

optimize performance as conditions change. Sometimes the noise reduction feature hurts by creating more harmful artifacts than it helps by reducing noise. It is not a box you turn on and forget. Is it worthwhile? A phone net operator will love his DSP for its magic notch function. A DXer or contester fishing for weak low band signals may find that the noise reduction functions sometimes help catch one. If you mainly want a narrow bandpass filter however, spend your money on an IF crystal filter. The DSP presents a learning curve and yet another set of knobs requiring attention during a contest. And it will hurt you if you mis-adjust it. On a positive note, there are ten QSOs that are in my log because of the DSP. I'm keeping my DSP-9+ and DSP-59+, but they're usually in the OFF mode!



PRES AA6KX PRESENTING GAVEL AWARD TO WIFEA WHO MADE THE MOST QSO'S IN SS, PHONE & CW

Annual Picnic

A mega round of thanks to Jack Morgan, W1FEA, and family for turning over their DX campus on the hill for our annual picnic for the third straight year. Their generous hospitality makes a memorable day for the club, members and guests. Bar-B-Cue and potluck tasty, pool temperate and pleasurable, weather just about California- high- country perfect. Star of the afternoon had to be the shack, no less than super, furnished with the stuff that helped Jack win the gavel for producing the most '93 SS QSOs, fone and cw combined. While checking out the equipment with no little awe and plentiful comment from the YF on the unusual neatness of the shack, the JUG observed that Jack possibly has developed a secret weapon. Something to do with an element on his big beam at right angles to the rest of the elements. The significance of that caused some buzz. Some sort of dual diversity created to add S units? Jack's not talking.

It was a great turn-out. Bruce conducted a good, quick meeting. The Reno fellas sortied over the mountains, nine new members were welcomed, the Leasons came down from one mountain and drove up another—200 miles away, folks brought beaucoup goodies, and the YL's and kids came along to see NCCC at its relaxed best.

de AA6KX

Worked All California Counties Awards

The Worked All California Counties Award has been sponsored by the NCCC since 1989, when we assumed the responsibility from the Oakland Radio Club. Administration is handled by Ken Anderson, K6PU. He processes applications and responds to requests for information with diligence, but the Club has not been doing much to promote this award. In fact, another club recently went so far as to volunteer to take over from us, since it was their impression the program was rapidly dying. We are trying to get more coverage for the award in QST, CQ, and WorldRadio. But there is more each member can do. Make up a small flyer giving the rules for the award and put it in each QSL you send in an envelope. After CQP and SS, you're sure to receive a lot of QSL requests from U.S. stations. Let them know.

W.A.C.C. Rules:

1. Contacts may be made on any amateur radio band or mode. (No repeater or digipeater contacts allowed.)
2. QSL cards for contacts made on or after October 1, 1987 may be submitted for the W.A.C.C. award.
3. A QSL card must be presented for each of the 58 counties.
4. Each QSL card must have the county claimed, printed or written, on the card by the person issuing the card.
5. All your contacts must be made from the same county.
6. Portable and Mobile units may be worked.
7. You do not have to be a member of the NCCC.
8. Your QSL cards will be returned with the W.A.C.C. Award.
9. Send your application and 58 cards and \$3 or 10 IRC's (to cover expenses) to: NCCC W.A.C.C. Award
c/o K. O. Anderson, K6PU
P.O. Box 853, Pine Grove, CA 95665



Treasury Notes

De AA6MC

All but 36 of our members have renewed. I've marked the JUG label for those of you who have not yet renewed. We'd like to keep our members, so please renew if you haven't already. Please use the coupon below or in one of the last three JUG issues.

THIS IS THE LAST ISSUE OF THE JUG FOR THOSE WHO HAVE NOT RENEWED. ☹

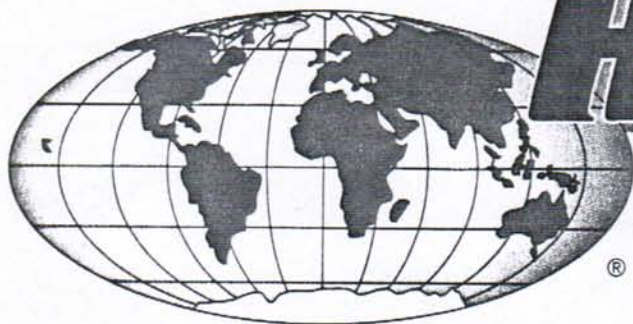
	1994-95 Budget	YTD Actual
Membership dues	\$3780	\$3228
Member Contributions to Gen'l Fund	\$ 100	\$ 400
Contributions to CQP	0	\$ 10
Advertisements	\$ 300	\$ 300
Total revenue	\$4180	\$3938
JUG publishing and special mailings	(\$2600)	(\$ 431.49)
NCCC share CQP exps	(\$ 500)	
Awards	(\$ 650)	(\$ 61.16)
Visalia Hospitality	(\$ 200)	
Contingency	(\$ 230)	
Self-funding events (Banquets, badge)	(\$ 0)	(\$246.22)
Total expenses	(\$4180)	(\$738.87)

Our current account balance is as follows:

Balance at start of Fiscal Year 94-95	\$2501.02
Activity credited to Fiscal Year 94-95	\$3199.13
Activity credited to Fiscal Year 95-96	\$ 48.00

GENERAL FUND TOTAL: \$5748.15

> 12 STORE BUYING POWER! <



HAM RADIO OUTLET

WORLDWIDE DISTRIBUTION



MA-40

40' Tubular Tower
REG. \$809 **SALE \$679**

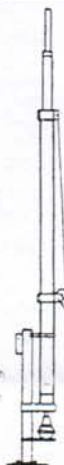
MA-550

55' Tubular Tower
Handles 10 sq. ft. at 50 mph
Pleases neighbors with tubular streamlined look
REG. \$1369 **SALE \$1069.95**

TX-455 SALE \$1499.95

55' Freestanding Crank-Up
Handles 18 sq. ft. at 50 mph
No guying required
Extra-strength construction
Can add raising and motor drive accessories

Shown with
Optional
Rotor Base



Towers Rated to EIA Specifications
Other Models at Great Prices!

To Celebrate TGIK
Day
in New Hampshire
All HRO stores will
have
EXTRA,
Special, Discounts
on September 10

SUNNYVALE, CA 94086
510 Lawrence Expwy. #102
(408) 736-9496
(800) 854-6046
Tom, KB6LUC, Mgr.
Lawrence Expwy.
So. from Hwy. 101

OAKLAND, CA 94606
2210 Livingston St.
(510) 534-5757
(800) 854-6046
Rich, W4SWYB, Mgr.
I-880 at 23rd Ave. ramp

TS-50S/TS-60S

HF Transceiver 6M

NEW!



TS-50S - World's smallest HF transceiver
100W out, (90W TS-60S, 50MHz only) • SSB, CW, AM, FM,
12V Gen. Cov. RX, 6.4 lbs., 7.16 x 2.4 x 9.32"
105 db dynamic range, 100 Memos.

Optional external ant. tuners available (TS-50S only)
CALL FOR SPECIAL LOW PRICE!

Phone Hours:
9:30 AM
to 5:30 PM

Store Walk-In
Hours:
10:00 AM
to 5:30 PM
Closed Sundays

September 1994
NCCC
44 Toyon Terrace
Danville, CA 94526

FIRST CLASS

FIRST CLASS
FIRST CLASS

Your Full Membership Paid Through June 30, 1995
Charles Epps, W6OAT
651 Handley Trail
Redwood City, CA 94062

